



Horizontal type Boring machining center



SUZHOU GUDWAY CNC EQUIPMENT CO.,LTD

Add : No. 21 Xiexin Road, New District, Suzhou City, Jiangsu Province, China.

Tel : +86-0512-65580060

Email : info@gudwaycnc.com

Web : <http://www.gudwaycnc.com>



SUZHOU GUDWAY CNC EQUIPMENT CO.,LTD



CNC Horizontal Boring & Milling Machining Center GHB series

Our equipment is manufactured by the most advanced technology and the best process team. It is widely used for high-precision processing users and mass production customers, such as Automotive Engineering, Shipbuilding, Energy, Machining of gear box parts.



High torque spindle motor



Direct highlight work light

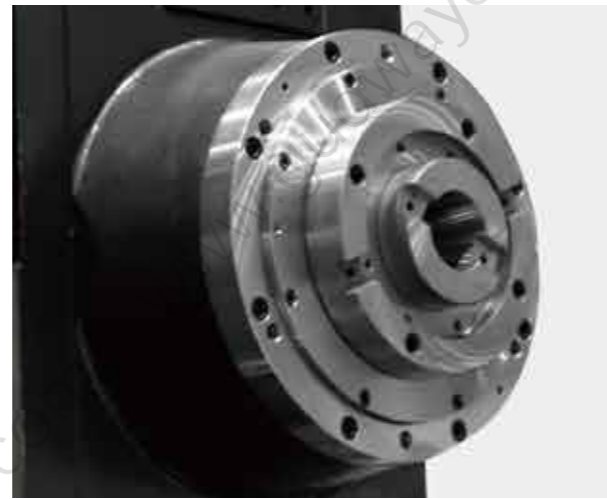
GHB SPINDLE

MACHINE SPINDLE

Horizontal Boring & Milling Machining Center GHB series

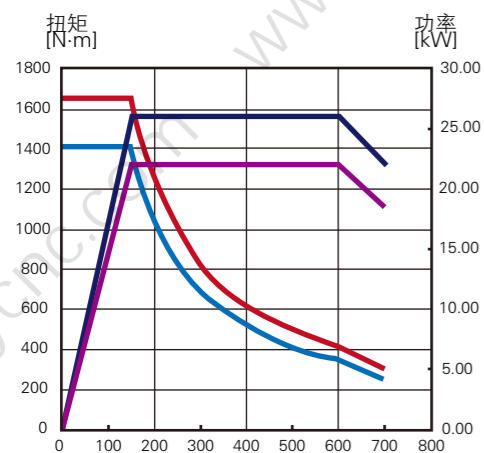
Gear type spindle

Spindle design

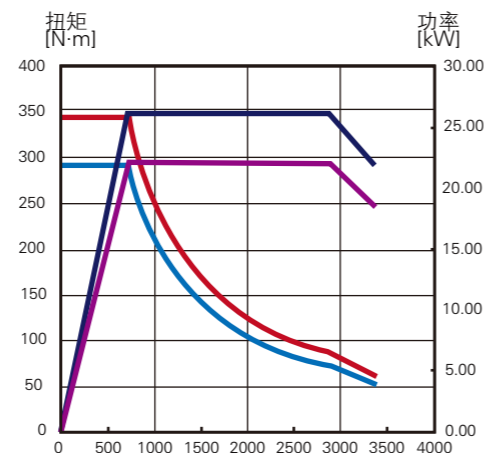


The gear-box spindle design of the double layer rotating body makes the spindle stably supported during processing, and the extension socket can rotate simultaneously with minimal wear.

SPINDLE TORQUE CHART



低档扭力曲线 /Low Gear



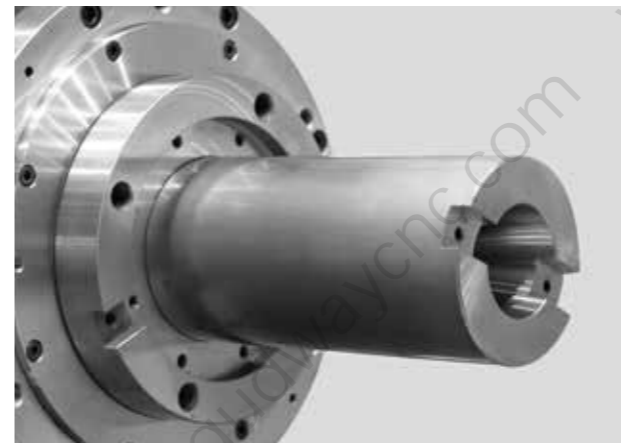
高档扭力曲线/High Gear





Worktable fully supported structure, stable and reliable

The axial movement has a fully supported structural design. With the precise ball screw drive, it can obtain excellent displacement accuracy. The layout of internal pipeline circuit is focused on safety, tidiness and beauty.



The lining shaft

The lining shaft is supported by large-diameter bearings which can highlight its excellent processing stability during heavy cutting.



Ball screw

The structure of large diameter pre tightening ball screw with 3 axes heavy load guide rail forms the perfect structure of high rigidity machine tool.

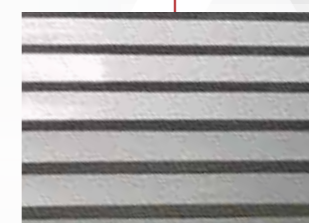
GHB SERIES

HORIZONTAL BORING & MILLING MACHINE

Powerful boring bar spindle with extension sleeve



Flexible processing water and gas pipe



Fishscale Y axis protection



Focused working light

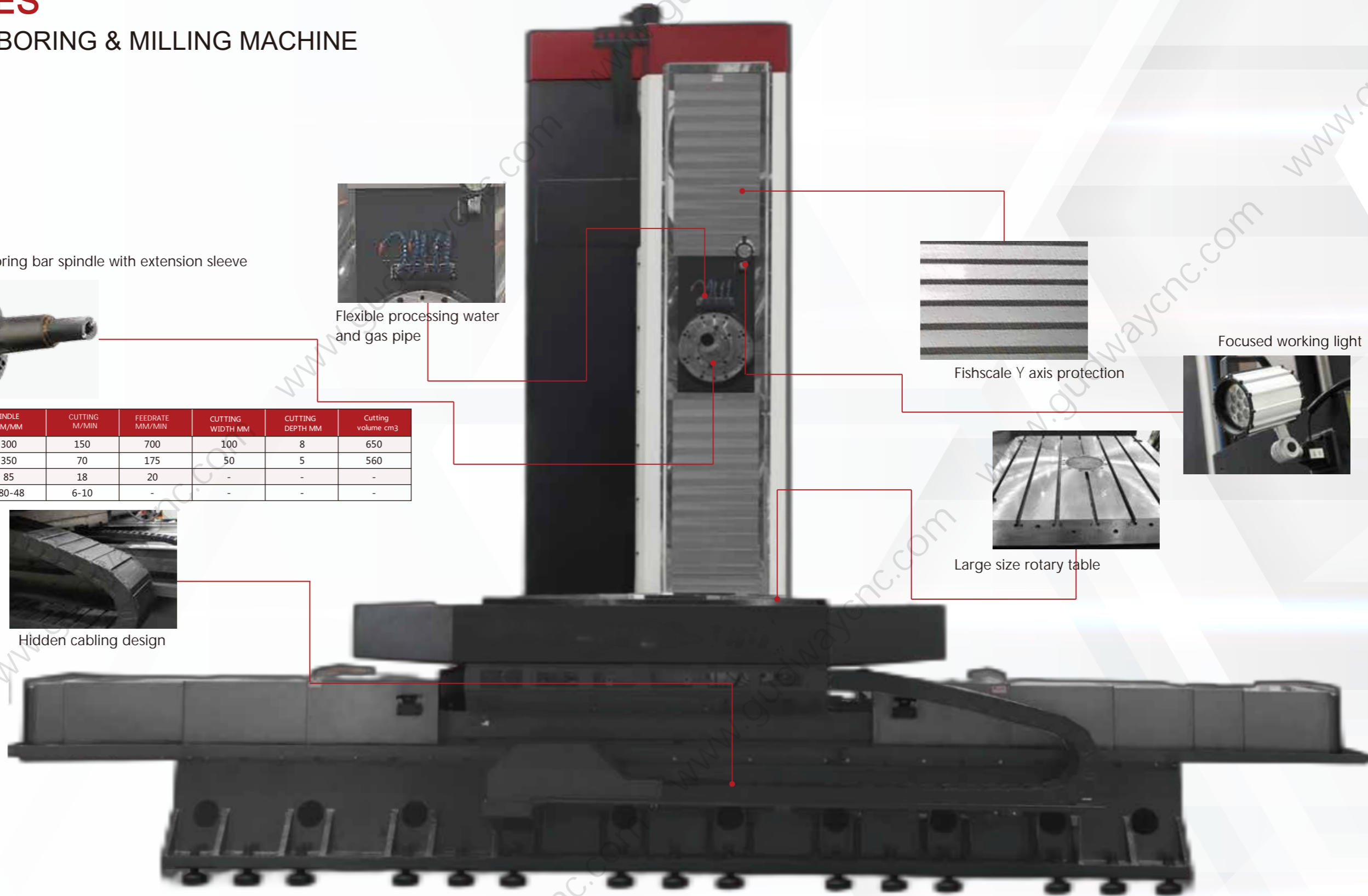


Large size rotary table



Hidden cabling design

ITEM	MATERIAL	TOOL DIAMETER MM	SPINDLE RPM/MM	CUTTING M/MIN	FEEDRATE MM/MIN	CUTTING WIDTH MM	CUTTING DEPTH MM	Cutting volume cm3
面铣	1045	Φ160	300	150	700	100	8	650
立铣	1045	Φ63	350	70	175	50	5	560
钻削	1045	Φ60	85	18	20	-	-	-
攻牙	1045	M5-M70	480-48	6-10	-	-	-	-





GHB series standard turntable, forward and reverse 360° rotation accuracy can be controlled at 0.001° to achieve high-precision indexing application

CUTTING CAPACITY

The boring bar with diameter of 130 and double-layer shaft design provide strong and powerful cutting ability. Actually tested the material of No.45 steel. The surface milling width is 160mm and the cutting depth can reach 8mm. In vertical milling, the cutting width is 50mm, the cutting depth is 5mm, and the cutting volume is up to 560 cubic centimeter, it is the best tool for machining application.



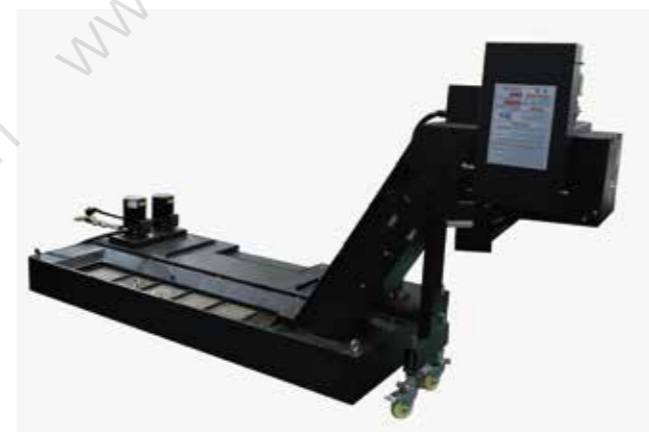
Column

The column moves laterally and the table moves in a single axis, which allows heavy work piece processing and improves the accessibility of the work piece.



Precision drive system

The three-axis is driven by high-precision (grade C3) large-diameter ball screw, and the whole series is driven by AC servo motor, with high precision and good rigidity



Screw + chain chip removal machine

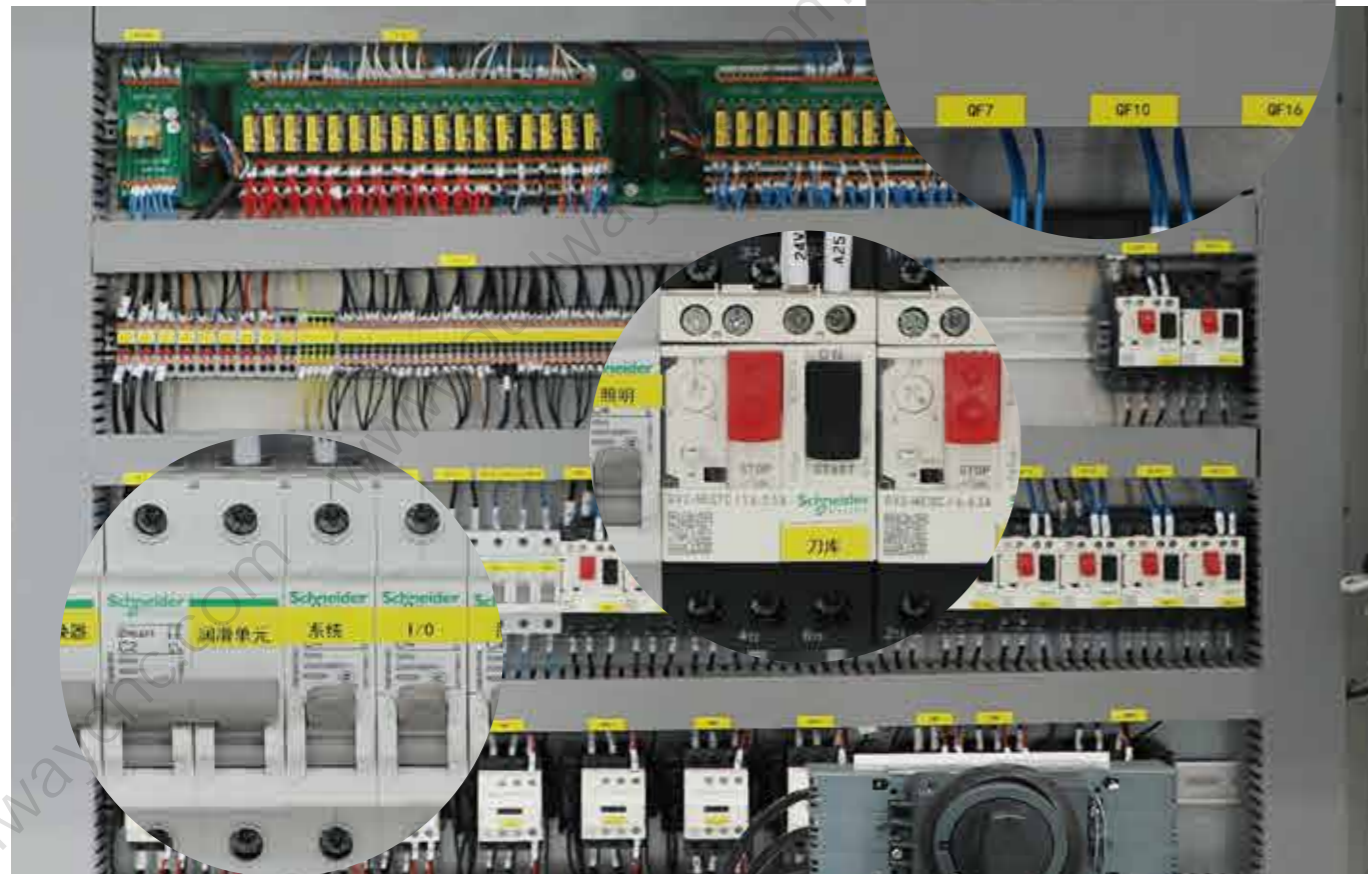
The horizontal X-axis spiral chip conveyor is the standard equipment to increase the chip removal efficiency.

Product Advantage

GHB has higher technical standards and higher quality management system with advanced peers, so we can provide high-performance machines with better delivery time, price and timely service.

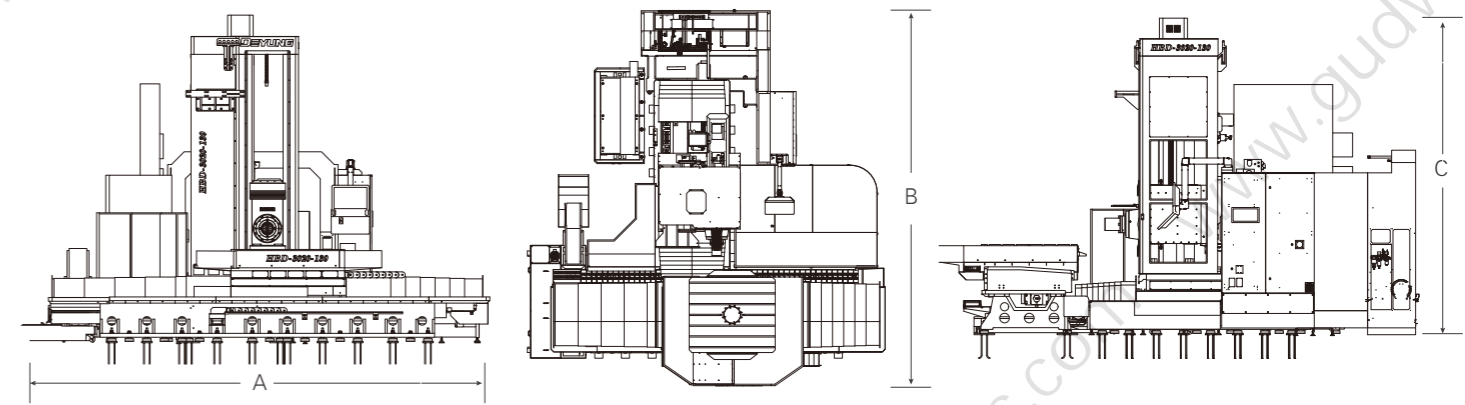


10.4 "large size extended operation panel, clear and easy operation.



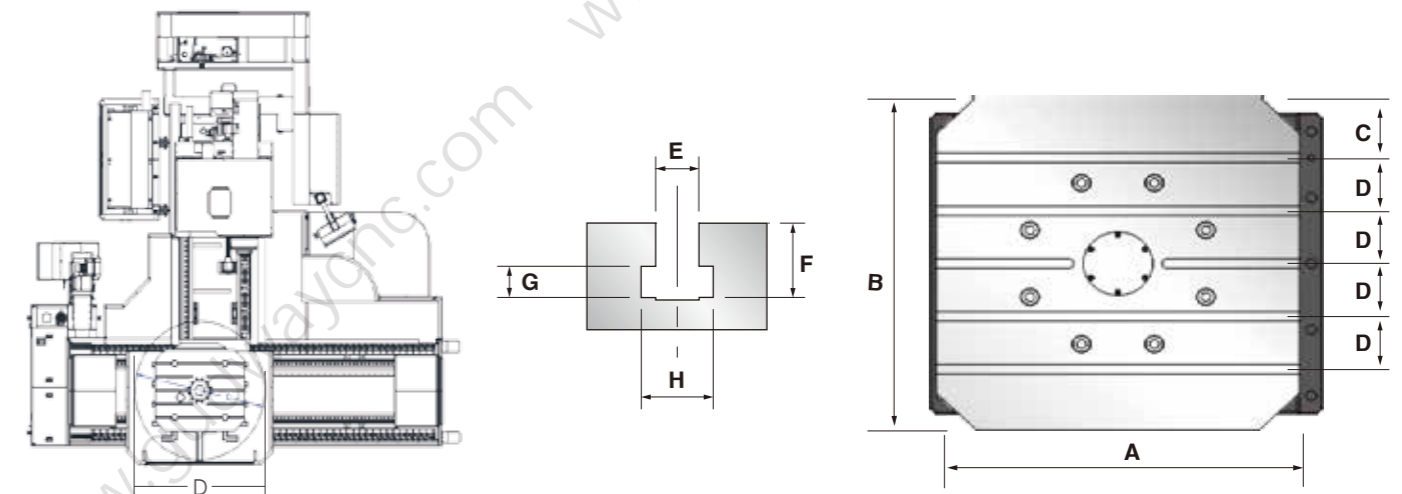
- The distribution box adopts the European standard design and production, and the wire sleeve, line number and Chinese marking details are in place. The electrical components adopt the world famous brand, stable and reliable. (Schneider/ Omron)

DIMENSION OF MACHINE LAYOUT



ITEM	2518	3018	2520	3020	4020	3026	4026
LENGTH (A)	7000mm	7000mm	7500mm	8500mm	9500mm	8500mm	9500mm
DEPTH (B)	6500mm	6500mm	7800mm	7800mm	7800mm	7800mm	7800mm
HEIGHT (C)	4100mm	4100mm	4100mm	4100mm	4100mm	4700mm	4700mm
TACTICAL DIA. (D)	Φ2050	Φ2050	Φ2350	Φ2350	Φ2350	Φ2500	Φ2500

Gudway reserves the right to alter the all designs, specifications and option list, without further notice.



Model	A	B	C	D	E	F	G	H	T slot
2518	1250	1250	225	200	22	40	16	40	5
3018	1600	1400	100	200	22/24	40/45	16/18	40/42	5/7
2520	1600	1400	100	200	24	45	18	42	7
3020	1600	1400	100	200	24	45	18	42	7
4020	1600	1400	100	200	24	45	18	42	7
3026	1800	1600	200	200	24	45	18	42	7
4026	1800	1600	200	200	24	45	18	42	7

MECHANICAL SPECIFICATIONS

MODEL	UNIT	GHB2518-110	GHB2520-110	GHB3020-110	GHB2518-130		GHB2520-130	GHB3018-130	GHB3020-130	GHB4020-130	GHB3026-130	GHB4026-130
TRAVEL												
X AXIS TRAVEL	mm	2500	2500	3000	2500		2500	3000	3000	4000	3000	4000
Y AXIS TRAVEL	mm	1800	2000	2000	1800		2000	1800	2000	2000	2600	2600
Z AXIS TRAVEL	mm	1500	1500	1500	1500		1500	1500	1500	1500	1500	1500
W AXIS TRAVEL	mm	500	500	500	700		700	700	700	700	700	700
Distance from spindle nose to worktable	mm	200-2000	200-2000	-50-1950	150-1950		-50-1950	-50-1950	-50-1950	-50-1950	-50-1950	-50-1950
Distance from spindle nose center to worktable center	mm	0-2000	0-2000	0-2000	-100-2100		0-2200	0-2200	0-2200	0-2200	0-2200	0-2200
Distance from floor to table surface	mm	1110	1350	1350	1110		1350	1350	1350	1350	1350	1350
WORKTABLE												
工作台面面积	mm	1200*1400	1400*1600	1400*1600	1200*1400		1400*1600	1400*1600	1400*1600	1400*1600	1600*1800	1600*1800
选购工作台(荷重)		N/A	N/A	N/A	N/A		N/A	N/A	1600*1800(15000)	1600*1800(15000kg)	1800*2000(15000kg)	1800*2000(15000kg)
工作台荷重	kg	6000	8000	8000	6000		8000	8000	8000	8000	10000	10000
工作台分度(B轴分度)	Degree	0.001°	0.001°	0.001°	0.001°		0.001°	0.001°	0.001°	0.001°	0.001°	0.001°
T型槽尺寸(宽X槽X距离)	mm	22*5*200	24*7*200	24*7*200	22*5*200		24*7*200	24*7*200	24*7*200	24*7*200	24*7*200	24*7*200
SPINDEL												
主轴转速	rpm	2500	2500	2500	2500		2500	2500	2500	2500	2500	2500
主轴马达(连续/30分)	kW(HP)	22/26(25/30)	22/26(25/30)	22/26(25/30)	22/26(25/30)		22/26(25/30)	22/26(25/30)	22/26(25/30)	22/26(25/30)	22/26(25/30)	22/26(25/30)
主轴锥度	#	N0.50	N0.50	N0.50	N0.50		N0.50	N0.50	N0.50	N0.50	N0.50	N0.50
主轴型式	Type	Two way gear	Two way gear	Two way gear	Two way gear		Two way gear	Two way gear	Two way gear	Two way gear	Two way gear	Two way gear
镗杆轴直径	mm	110	110	110	130		130	130	130	130	130	130
主轴前端轴承直径		NN3032/ø240	NN3032/ø240	NN3032/ø240	NN3036/ø280		NN3036/ø280	NN3036/ø280	NN3036/ø280	NN3036/ø280	NN3036/ø280	NN3036/ø280
Tool storage												
刀柄型式	ISO	BT50	BT50	BT50	BT50		BT50	BT50	BT50	BT50	BT50	BT50
拉刀螺栓		MAS-P40-1(45°)	MAS-P40-1(45°)	MAS-P40-1(45°)	MAS-P40-1(45°)		MAS-P40-1(45°)	MAS-P40-1(45°)	MAS-P40-1(45°)	MAS-P40-1(45°)	MAS-P40-1(45°)	MAS-P40-1(45°)
刀库容量	Tools	40T	40T	40T	40T		40T	40T	40T	40T	40T	40T
换刀时间	sec	90	90	90	90		90	90	90	90	90	90
最大刀具直径/邻刀空直径	mm	ø125/ø250	ø125/ø250	ø125/ø250	ø125/ø250		ø125/ø250	ø125/ø250	ø125/ø250	ø125/ø250	ø125/ø250	ø125/ø250
刀具最大长度	mm	400	400	400	400		400	400	400	400	400	400
刀具最大重量	kg	25	25	25	25		25	25	25	25	25	25
FEED												
快速进给(X/Y/Z/W)	m/min	10/8/8/6	10/8/8/6	8/8/8/6	10/8/8/6		8/8/8/6	8/8/8/6	8/8/8/6	8/8/8/6	8/8/8/6	8/8/8/6
切削进给速率	mm/min	5000	5000	5000	5000		5000	5000	5000	5000	5000	5000
气压需求	kg/cm2	7	7	7	7		7	7	7	7	7	7
机床所需电源容量	kVA	70	70	70	70		70	70	70	70	70	70
冷却箱容量	L	300	300	300	300		300	300	300	300	300	300
SIZE & WEIGHT												
L	mm	7000	7500	8500	7000		7500	7500	8500	9500	8500	9500
W	mm	3500	7800	7800	3500		7800	7800	7800	7800	7800	7800
H	mm	4100	4100	4100	4100		4100	4100	4100	4100	4700	4700
N.W.	kg	27000	28000	30000	30000		32000	32000	34000	38000	38000	40000

Gudway reserves the rights to alter the all designs, specifications and option list, without further notice.

STANDARD

FANUC0I-MFCNC CONTROL
2500rpm full gear box (tooth ratio 1:4.923)
W shaft 500mm/700mm boring bar
Auto lubrication
Half cover sheet metal
Automatic power off function
Electrical box heat exchanger

Chain chip removal system
Internal screw chip removal machine
Tri color light
Spindle blowing
Cutting fluid system
Anchor bolt
Tool box

Hand pulse generator
RS-232 interface
Rotary hanging operating box
Oil pressure balancing system
(including counterweight cylinder, box, solenoid valve)
AC 380V transformer
FANUC-AICCI

OPTIONAL

FANUC31i-MD CONTROL
FANUC mold processing kit
Inclined surface machining
The spindle motor is enlarged ail30/7000
X/Y/Z three-axis fully closed loop optical scale device
B axis ring grating ruler
15 "large screen mirrors the touch screen

Manual 90-degree milling head
Manual universal milling head
Spindle extension sleeve 250/350/450mm
Flat spinning discs and accessories
L-shaped fixed backplane
Automatic tool length/workpiece measurement system
ATC40 Chain horizontal boring
Tool library (60/90/120 optional)

Spindle CTS 1.0MPa/3.0MPa
Full cover sheet metal shield
Z-axis travel 1500mm upgraded to 2000mm
Disc oil and water separator
Electrical box upgrade air conditioning system